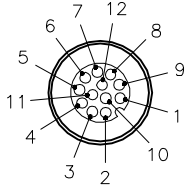
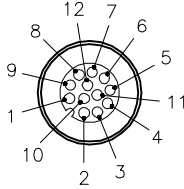


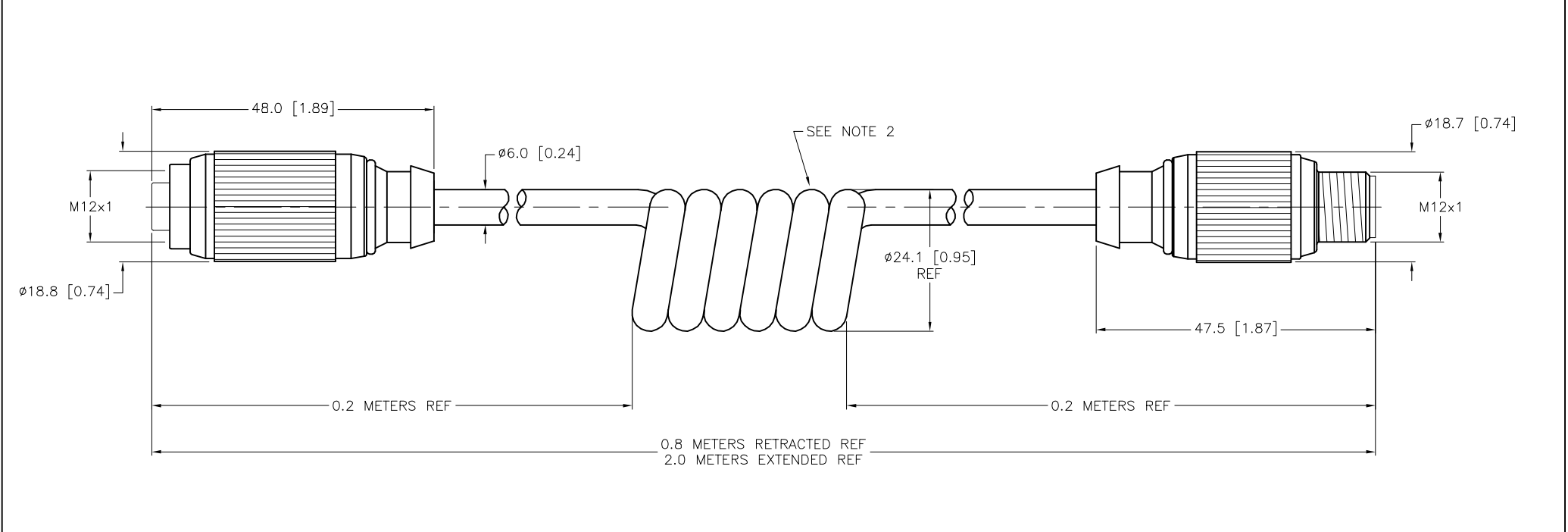




FEMALE END VIEW		MALE END VIEW	SPECIFICATIONS	
			CONTACT CARRIER MATERIAL	NYLON OR TPU
1 = WHITE 7 = BLUE 2 = BROWN 8 = RED 3 = GREEN 9 = ORANGE 4 = YELLOW 10 = TAN 5 = GRAY 11 = BLACK 6 = PINK 12 = VIOLET		1 = WHITE 7 = BLUE 2 = BROWN 8 = RED 3 = GREEN 9 = ORANGE 4 = YELLOW 10 = TAN 5 = GRAY 11 = BLACK 6 = PINK 12 = VIOLET	MOLDED HEAD MATERIAL/COLOR	TPU/YELLOW
			CONTACT MATERIAL/PLATING	BRASS/GOLD
			COUPLING NUT MATERIAL/PLATING	BRASS/NICKEL
			RATED CURRENT [A]	2.0 A
			RATED VOLTAGE [V]	30 V
			OUTER JACKET MATERIAL/COLOR	TPU/GRAY
			CONDUCTOR INSULATION MATERIAL	PVC
			NUMBER OF CONDUCTORS [AWG]	12x24 AWG
			TEMPERATURE RANGE	-40°C to +90°C (-40°F to +194°F)
			PROTECTION CLASS	NEMA 1,3,4,6P AND IEC IP68, IP69K



SOURCE DRAWING - FOR REFERENCE ONLY

- NOTES:
- 1. "/S90" DESIGNATES THERMOPLASTIC POLYURETHANE (TPU) CABLE JACKET.
 - 2. NUMBER OF COILS IS REFERENCE ONLY.

NOTES: 1. "/S90" DESIGNATES THERMOPLASTIC POLYURETHANE (TPU) CABLE JACKET. 2. NUMBER OF COILS IS REFERENCE ONLY.					RELATED DOCUMENTS		3RD ANGLE PROJECTION		THIS DRAWING IS CONFIDENTIAL AND THE PROPERTY OF TURCK INC. USE OF THIS DOCUMENT WITHOUT WRITTEN PERMISSION IS PROHIBITED.		 <div>3000 CAMPUS DRIVE MINNEAPOLIS, MN 55441 1-800-544-7769 (763) 553-7300 (763) 553-0708 fax www.turck.us</div>					
					1.											
					2.											
					3.											
					4.											
MATERIAL					ALL DIMENSIONS DISPLAYED ON THIS DRAWING ARE FOR REFERENCE ONLY		DRFT		RWC		DATE 04/30/10		DESCRIPTION RKG 12T-2-RSG 12T/S90-SP			
SEE SPECIFICATIONS							APVD				SCALE 1=1.0					
FINISH					CONTACT TURCK FOR MORE INFORMATION		UNIT OF MEASUREMENT				IDENTIFICATION NO. U2-17383				REV F	
SEE SPECIFICATIONS							MILLIMETER [INCH]									
							DO NOT SCALE THIS DRAWING				FILE: U2-17383				SHEET 1 OF 1	
F	UPDATE VOLTAGE RATING			CBM	02/21/23	78300										
REV	DESCRIPTION			BY	DATE	ECO NO.										